



Pursuing **Truth**
Building **Trust**

COMPANY OVERVIEW

ABOUT US

Incorporated in 1996, Central Business Information Limited (CBI) is a global business information company covering Hong Kong China, Mainland China, and 214 countries and regions with a full range of services. We offer Due Diligence, Employment Screening, Business Verification, Business Credit, Asset Search, and Site Investigation across diverse industry sectors.

Our accurate, comprehensive and up-to-date business intelligence empowers clients to make informed strategic decisions and take the best actions.

OUR MISSION

Pursuing **Truth** Building **Trust**

To see the truth behind walls and bring trust to our world,
between people and organizations.

AT A GLANCE

FOUNDED IN
1996

25+
YEARS OF EXPERTISE

COVERING
214
COUNTRIES AND REGIONS

8
ESTABLISHED OFFICES

3,000+
EXISTING CLIENTS

300+
PROFESSIONALS

OUR VALUES

Together We Achieve Greatness

Our attainment of the ISO 9001 and ISO/IEC 27001 certifications is a strategic accomplishment that we highly value. This formalized commitment to international standards underpins our ability to deliver consistent, reliable, and secure services, thereby reinforcing client trust and solidifying our competitive advantage.

ISO 9001 Certification



Quality Management Systems

We have attained ISO 9001 certification since 2015, reinforcing our commitment to quality, enhancing operational efficiency, and ensuring exceptional service through standardized processes and continuous professional development.

ISO/IEC 27001 Certification



Information Security Management Systems

We have attained ISO/IEC 27001 certification since 2020. This reinforces our commitment to a holistic security approach, safeguarding data integrity against cyber threats and ensuring exceptional service through the highest international standards of information protection.



COMMITMENT

We are committed to preventing risks and building trust for clients.



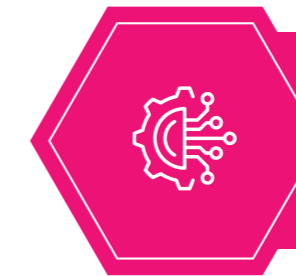
INTEGRITY

We build and maintain rapport with honesty and loyalty.



INSIGHT

We listen to understand and resolve with practical solutions.



INNOVATION

We deliver strategic insights with innovative approaches and practical solutions.



INDEPENDENCE

We stand for independence from interference.



PASSION

We strive for excellence in all we do.

PRECISION IN EVERY DECISION

WHAT WE DO

Assisting our clients in making business decisions is a key part of our mission.

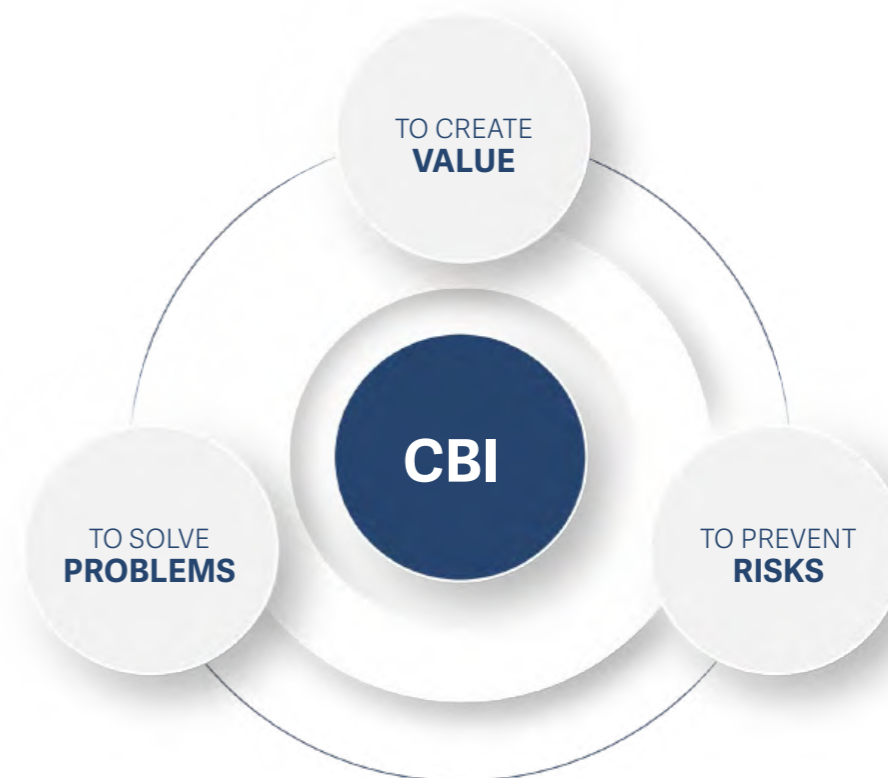
We strongly believe that our primary role in this area is to deliver a full range of accurate business information in a time-efficient and cost-effective manner.

We offer coherent strategic solutions in gathering information for any business looking to gain a competitive advantage in the market.

In an age when seconds count and information rules, we are committed to beating the clock and empowering our clients with credible information.

OUR GOALS

We constantly boost our service standards to achieve three primary goals for our clients:



OUR MILESTONES

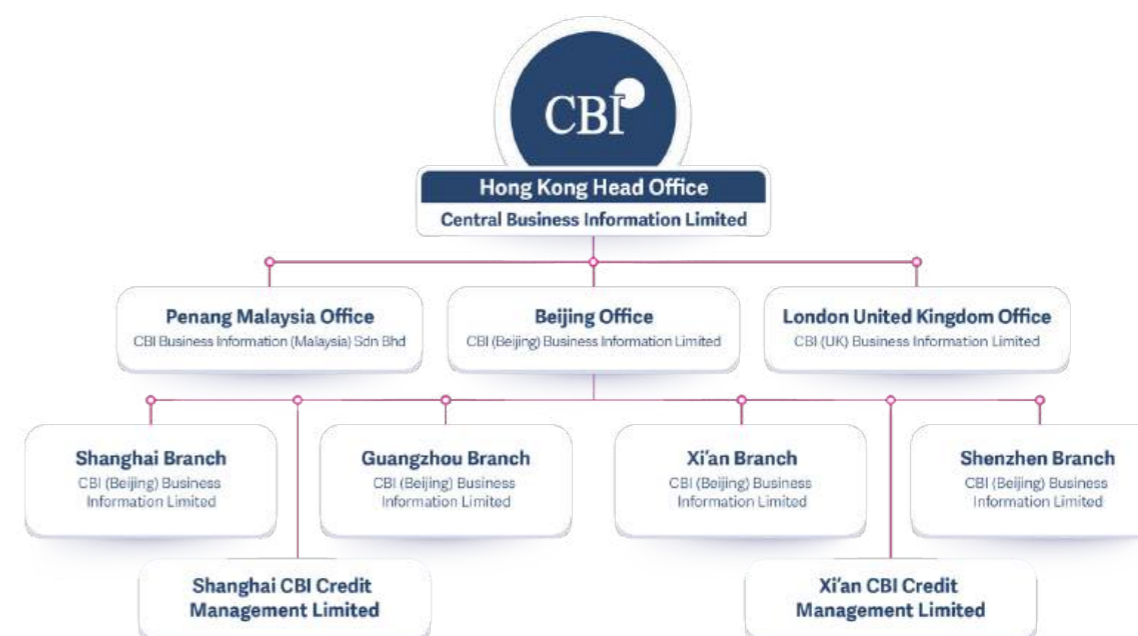
Together We Build Our Success



GLOBAL PRESENCE

Connecting Expertise Across Borders

CBI currently operates eight established offices with headquarters in Hong Kong, seven offices located in Beijing, Shanghai, Guangzhou, Xi'an, Shenzhen in China, Penang Malaysia and London United Kingdom with over three hundred staff members. Each division is led by highly experienced and seasoned professionals.



We work with clients to develop innovative services by combining technology, expertise and industry knowledge. Our diverse products and geographical coverage as well as our ongoing post-sales services gain us a competitive edge. With our in-house IT division, we have developed the most advanced integrated system in the industry to collect, process and analyze business and individual information.

Over the years our professionalism has made us a preferred partner to the world's largest audit and accounting firms, law firms, investment institutions, commercial banks, listed companies and government authorities.

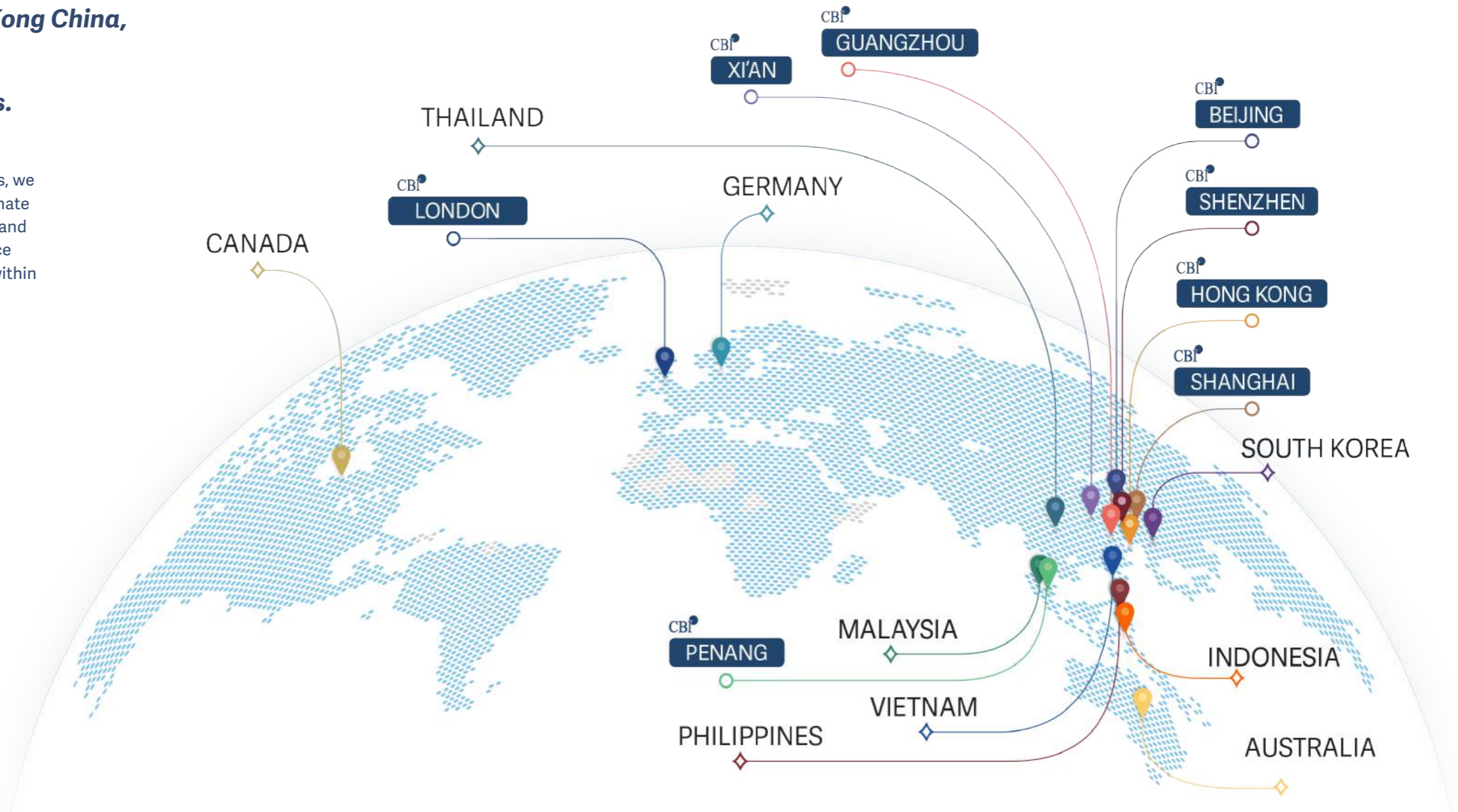
At CBI, we are committed to helping our clients construct a safe and impartial business environment with our streamlined yet focused information.

GLOBAL SERVICE COVERAGE

Services covering Hong Kong China, Mainland China and 214 countries and regions.

With our secure network of partners covering over 214 countries and regions, we pride ourselves on our ability to coordinate and quickly mobilize resources to plan and execute large scale on-site due diligence projects across multiple jurisdictions within tight time constraints.

- CBI office
- ◇ Local Station
- Service coverage



OUR STRENGTHS

Excellence You Can Count On

SOLID FOUNDATION

25+

Years of service with a strong reputation

20+

In-house experts in our technology development and innovation division

150+

In-house researchers across Hong Kong China, Mainland China and Penang Malaysia

EXTENSIVE GLOBAL COVERAGE

Across

214

Countries and Regions

STRONG CLIENTELE

3,000+

Clients from the world's largest CPA firms, law firms, investment institutions, commercial banks, listed companies and government authorities

20+

years trusted by Big 4 CPAs

100+

foreign, Chinese and local investment banks

340+

top-tier law firms around the globe

880+

IPO projects involved

TECHNICAL & COMPLIANCE ADVISORY

- Professional team customizes IPO due diligence scope
- Expert advice and tailored training
- Robust compliance and quality control

OUR STRENGTHS

FRESH INVESTIGATION

Even in this day and age, not all reliable and official business information is accessible online; relying on database information or the traditional desktop research may expose businesses to severe financial and compliance risks.

Unlike some information agencies that provide online database reports, we conduct a fresh investigation every time a client orders a new request to ensure results are up-to-date and accurate with a guaranteed freshness period.

ROBUST DATA ASSETS

300M+

Litigation records of
China businesses

260M+

China company records

85,000+

KYC conducted per year

GLOBAL FIELDWORK

112,983

Sites visited

445

China cities
visited

447

Overseas regions
visited

OUR SERVICES

*Comprehensive Solutions,
Trusted Expertise*

Commercial challenges facing modern businesses can be arduous in this digital age. The bespoke solutions offered by our professional teams can help manage the entire process of risks management – from identifying risk, to measuring, mitigating and monitoring it on an ongoing basis.

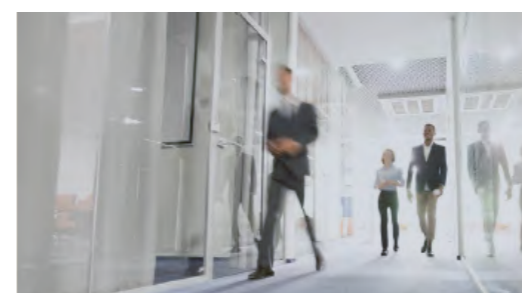
Our expertise in risk management and research analysis assures that our operations are fully compliant with professional conduct and the highest standards in the market.



Due Diligence



Business Credit



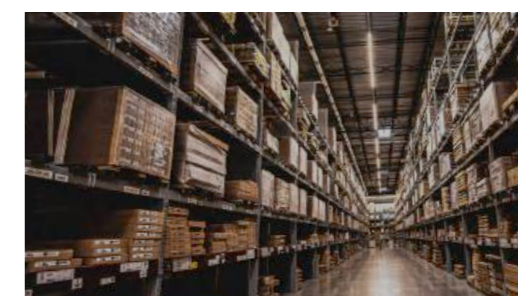
Employment Screening



Asset Search



Business Verification



Site Investigation

Our services

DUE DILIGENCE

Our risk-based approach with the use of extensive source channels provides the information clients need to conduct a comprehensive risk assessment for critical business decisions.

OVERVIEW

Any significant business engagement or transaction should warrant an in-depth due diligence investigation to uncover relevant compliance, regulatory, legal and reputational risks, oftentimes involving the understanding and dismantling of complex network of individuals and companies. The key to conducting comprehensive research, processing and analyzing a high volume of data in an effective manner lies in the utilization of powerful tools for data search and extraction from multiple sources and channels.

Meanwhile, the application of industry, regulatory, and country expertise is crucial in the prioritization and contextualization of findings. Our Due Diligence Products which support M&A, IPO and other business needs of our clients. We also customize investigations for specific scopes to suit clients' needs under unique circumstances.

PRODUCT OFFERS

- Pre-IPO Due Diligence
- Customer Due Diligence
- Distributor Due Diligence
- Remote Due Diligence
- Ultimate Beneficial Owner Search
- M&A Due Diligence
- Supplier Due Diligence
- Human Resources Due Diligence
- Independence Check
- Director Due Diligence
- Financial Due Diligence

Our services

BUSINESS CREDIT

Integration of information obtained from various sources, combined with in-depth analysis and credit risk assessment to safeguard corporate clients against apparent business and financial risks in their business engagements.

OVERVIEW

Adopting a foundational approach with registration information, credit rating and litigation records, our Credit Report uncovers potential business risks for clients before entering into a contractual relationship. The retrieval of registration information supplemented with investigations serves to verify a company's operational status hence providing an overview of the company background for the assessment of business scope and scale, qualifications, operating history, and financial performance.

Credit rating is a widely referenced indicator of whether a business relationship should be considered in the first place. Detailed findings obtained from litigation checks may reveal any ongoing disputes that could result in disruptions to the company's operations and hidden issues based on patterns identified in the litigation records.

PRODUCT OFFERS

- Credit Report
- Registration Report
- General Report
- Financial Report
- Media Search
- Writ Search
- Bankruptcy Search
- Advanced Credit Report
- Profile Report
- Comprehensive Report
- VIP Report
- Civil Litigation Search
- Winding-Up Search



Our services

EMPLOYMENT SCREENING

We offer impartial screening services with the highest standard to enable our clients to hire with confidence while minimizing recruitment risks.

OVERVIEW

Verifying the credentials of a job applicant is crucial to minimizing recruitment costs concerning training, hiring replacements, productivity impact, preparation by HR and interviewers involved in each procedure. Unapparent costs associated with compliance and reputational risks which are often neglected can prove to be costly once the damage is done.

Any discrepancy or slight dishonesty in the application should warrant a closer look at the candidate's background. In particular, the impact of leadership or senior management roles can be immense in the culture and the reputation of the company. Due care should be taken in screening for noncompliance, convictions and potential conflicts of interest when hiring or promoting existing employees into these roles.

PRODUCT OFFERS

- Identity Verification
- Education Verification
- Employment Vetting
- Performance Vetting
- Qualification Verification
- Credit Vetting
- Civil Litigation Search
- Criminal Record Search
- Adverse Record Search



Our services

ASSET SEARCH

We offer unique solutions in verifying asset ownership to help our clients manage any potential risk in business transactions.

OVERVIEW

Asset search or ownership verification may be requested for regulatory and risk management purposes. Examples of asset search include obtaining evidence for accurate financial reporting as part of annual audits for listed companies and ensuring the legitimacy of ownership during an asset transfer transaction. Some business engagements could be solely based on the condition that the company possesses specific kinds of permits or licenses, asset search or ownership verification through official sources and reliable channels is therefore essential.

The portfolio of assets being held by a business entity and an individual may be a decisive factor for the consideration of significant business transactions, as well as civil lawsuits. Asset Tracing is a comprehensive search, with the objective to find out any tangible or intangible assets being held. Such assets may include, but not limited to land / properties, shares, intellectual properties, vehicles, and equipment. Various searches may be applied to cross-check the current ownership status.

PRODUCT OFFERS

- Land & Property Search
- Vehicle Search
- Mining Right Search
- Sea Area Use Right Search
- Property Document Search
- Vessel Search
- Forestry Right Search
- Intellectual Property Search



Our services

BUSINESS VERIFICATION

Utilizing our unique experience, technology and industry knowledge, we provide a full range of verification services that help our customers reduce risk and secure transactions.

OVERVIEW

The rapid growth of the e-commerce market entails an increased incidence of fraudulent activities, ranging from the selling of counterfeit items and faulty products to illicit goods. This can significantly harm the reputation of platform operators and induce legal risks. Business verification built in as part of the seller onboarding process or regular monitoring of key sellers will help manage these risks. Business verification can be manifold and complicated, we are experienced in arranging visits to the actual place of operation to assess whether the company conducts business with verifiable bank account details and transactions, and if all necessary registrations and qualifications have been obtained.

This way the legitimacy of a business, especially those that operate solely online, can be evaluated in a reliable and direct fashion. To ensure a safe online business environment, buyer fraud must not be neglected while knowing customer demographics is just as important for any substantial transaction to safeguard sellers from payment and return fraud.

PRODUCT OFFERS

- Business Verification
- Qualification Verification
- Business Partner Verification
- Certificate Verification
- Bank Account Verification



Our services

SITE INVESTIGATION

With our full-time investigators and local networks stationed in Mainland China, Hong Kong China and 214 countries and regions around the globe, we safeguard against commercial fraud and business risks by presenting the real situations to our clients.

Our highly-trained professionals work under the strictest confidentiality to offer "on-the-ground" business intelligence in a timely and cost-effective manner.

OVERVIEW

Engaging overseas business partners and third parties can be risky and challenging when verification of their existence and scale of operations is not present.

Depending on the jurisdictions and industries, small to medium-sized companies do not always have a sufficient online profile indicative of their operational existence.

Moreover, descriptions of product and service offerings including operational scale and coverage may sometimes be difficult to verify without a physical visit to the company's premises either conducted discreetly or as an arranged visit.

Site investigation tailored to the company's business scope can often detect signs of operational abnormalities and intentional misrepresentation of the company's existence and scale. This is an effective way to avoid the risk of falling prey to any fraudulent schemes while identifying red flags that often go unnoticed with traditional research.

Compared to the conventional approach to due diligence, a site investigation will present a complete picture of the day-to-day business activities to identify and clear up any falsities and dispel fallacies.

PRODUCT OFFERS

- Existence & Operation Inspection
- Product Inspection
- Stock Taking
- Credit Report Retrieval
- Document Inspection
- Survey
- Virtual Tour
- Event Inspection
- Bank Confirmation Retrieval
- Document Retrieval
- Customer Flow Counting
- Exhibition Inspection

OUR TECHNOLOGY

Where Insight Meets Innovation

We respond to clients' needs with vision and foresight. Combining our experience, technology and industry knowledge, we offer market-leading products and all-round services to reduce risks, build trust and secure transactions for our clients.

OUR PLATFORM STREAMLINES

CBISKY

24/7 project management supported by a secure cloud-based platform for cross-party collaboration.

COMPREHENSIVE HONG KONG IPO DATABASE

CBIMAP

2,300+

Listing Applicants

3,900+

IPO Applications

7,100+

Listing Documents

GLOBAL BUSINESS INFORMATION GIGA FACTORY

CBICMT

560M+

Business Records Database

2,300+

Products Served

150+

Countries Covered

OUR TECHNOLOGY



CBI CMT

CBI CMT is our proprietary internal workflow system that integrates and centralizes research and production processes through an intelligent workflow engine.

Designed for high flexibility and adaptability, it enhances operational efficiency, ensures standardized outputs, and enables us to respond swiftly to evolving business needs and market changes.

Highly Efficient & Streamlined Delivery

- Streamlined and automated workflows enable us to handle projects more efficiently, resulting in quicker turnaround times for clients.

Reduced Risk of Error

- Automation and centralized workflows minimize manual intervention and improve reliability.

Consistent & High-Quality Output

- Standardized processes ensure accurate and industry-aligned deliverables.

Stronger Operational Control & Visibility

- Integrated dashboards and monitoring support effective management and stable service quality.



CBI MAP

CBI MAP is a comprehensive HK IPO market intelligence platform that enables users to quickly access and track the latest activities of IPO applicants and sponsors.

It serves as an essential tool for sponsors to retrieve reliable references and conduct efficient comparable analysis in IPO projects.

All-in-One IPO Intelligence

- Centralized access to structured IPO data from HKEX, SFC, and media, enabling quick and reliable reference.

Regulatory Insight & Market Understanding

- Review full application histories, including lapsed cases, to better understand regulatory changes and evolving market patterns.

Real-Time Market & Project Visibility

- Monitor IPO market activity and track project status in real time, giving sponsors clear oversight of ongoing engagements.



CBI SKY

CBI SKY is a web-based, all-in-one due diligence project management portal. It enables all stakeholders to collaborate, share information, and track progress through a centralized system, streamlining complex workflows and enhancing project coordination.

Streamlined Project Management

- Centralizes and systematizes due diligence workflows, helping sponsors and advisors manage complex IPO processes more efficiently.

Efficient Document & Audit Trail Management

- Supports structured reporting with version control for traceability and compliance.

Enhanced Multi-Party Coordination

- Enables seamless coordination and real-time information sharing among all stakeholders.

Secure & Organized Project Documentation

- Provides secure storage for all project files, ensuring easy access and proper archiving.

OUR TECHNOLOGY



CBI ORBIT

CBI ORBIT is an integrated enterprise compliance risk monitoring platform designed to address the increasingly complex global trade environment.

As regulatory requirements continue to tighten worldwide, enterprise need a more comprehensive approach to identifying partner risks. ORBIT covers both mainland China and international compliance watchlists, consolidating data from multiple regulatory authorities. It provides continuous and comprehensive due diligence and risk monitoring for enterprises.

Comprehensive Compliance Coverage

- Covers both Chinese and international regulatory watchlists to eliminate information blind spots.

Continuous Risk Monitoring

- Tracks business partners on an ongoing basis to identify emerging risks in a timely manner.

Multi-Dimensional Risk Identification

- Covers key dimensions including business operating status, litigation, adverse records, and media sentiment.

Flexible Configuration

- Monitoring scope, risk levels, and alert frequency can be fully customized based on user requirements.



CBI DEEPCHECK

CBI Deepcheck is a pre-employment background screening solution designed to provide fast and accurate access to employee basic information and risk insights.

Powered by a fully automated screening mechanism, the system completes the entire process without manual intervention, ensuring efficiency and consistency of results, and helping companies effectively identify potential risks during the hiring process.

Reduce Hiring Risk

- Enhances workforce reliability and helps avoid potential employment-related risks.

Multi-Dimensional Screening

- Covers key dimensions including adverse records, litigation, and credit-related risks.

Identify Potential Conflicts

- Detects possible conflicts of interest to reduce compliance exposure.

Accelerate Hiring Decisions

- Provides fast access to critical information, shortening the recruitment cycle.

OUR PASSION

Shaping Futures, Driving Progress

CORPORATE SOCIAL RESPONSIBILITY

Since 2018, the CBI volunteers have participated in thousands of events over the years, with colleagues' dedication making a meaningful impact on society. Our community support has continued unceasingly over the years, including during challenging times such as the pandemic, through financial and on-the-ground assistance to those in need. We remain committed to voluntary work and strengthening the community with care and compassion.

SINCE 2018

11,447

**MAN HOURS
CONTRIBUTED**

3,119

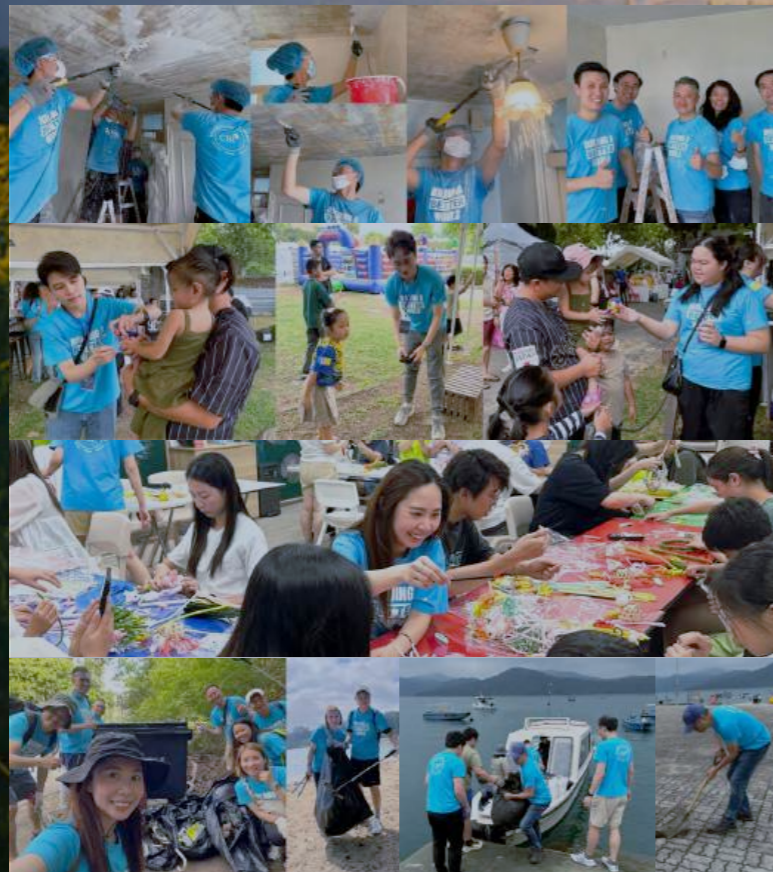
PARTICIPANTS

2,379

EVENTS

422

**BENEFICIARY
ORGANIZATIONS**



“ The time you have contributed is **worth way more than you think.** ”

*Terry Tse, Lead Specialist
Investigative Due Diligence*

“ The power of one person is limited, what we do as a **corporate entity** is much more **impactful.** ”

*Pauline Leung, Associate Director
Product Development*

OUR RECOGNITION

INDUSTRY RECOGNITION



DHL/SCMP HKBA 2017 – SME Award

Recognized for entrepreneurial vision and business excellence, demonstrating impactful solutions as a leading SME.



HKMA Quality Award 2018

Honored for setting exemplary quality standards and delivering business excellence.



Standard Chartered Corporate Achievement Awards 2024

Honored for innovative digital transformation, enabling efficient, globally scalable Due Diligence solutions.



Privacy-Friendly Awards 2025 – Gold Award

Recognized for exemplary dedication to data privacy and protection.

ESG & SUSTAINABILITY



Good MPF Employer 2014–2025

Recognized for 11 consecutive years as a Good MPF Employer, reflecting CBI's commitment to employee well-being and long-term workforce stability.



Caring Company 2016–2025

Recognized for 9 consecutive years, reflecting CBI's enduring commitment to community care and social responsibility.



ERB Manpower Developer Award Scheme 2020–2027

Honored for excellence in employee training and manpower development.



Hong Kong Volunteer Award 2022–2025

Recognized for impactful volunteer initiatives, promoting community wellbeing and social engagement.



BOCHK Corporate Low-Carbon Environmental Leadership Award 2024 – EcoPartner

Recognized for spearheading impactful low-carbon initiatives and promoting environmental sustainability.



ESG Pledge Scheme

Committed to sustainable practices driving positive environmental and social impact.

HONG KONG

21/F, 23/F,
Winland Square,
318 Hennessy Road,
Wanchai, Hong Kong

TEL (852) 2542 2199
EMAIL mail@cbil.com.hk

BEIJING

Room 1008-1009, 10/F, Block A,
Gemdale Plaza,
No.91 Jianguo Road,
Chaoyang District, Beijing,
China 100022

TEL (86) 10-8571 1658
EMAIL mail@chinacbi.com

SHANGHAI

Room H-I, 15/F,
No.1 Plaza,
800 Nanjing Road East,
Huangpu District, Shanghai,
China 200001

TEL (86) 21-5302 9680
EMAIL info@chinacbi.com

GUANGZHOU

Room 1305-P57, 13/F,
Tianhe Shopping Mall,
No.6 & 8 West Zhongshan Avenue,
Tianhe District, Guangzhou,
China 510630

EMAIL mail@chinacbi.com

XI'AN

Room A2 - A6, 24/F, Block A,
Glorious Plaza,
No. 305, Keji Road,
Yanta District, Xi'an,
China 710075

TEL (86) 29-6821 6005
EMAIL mail@chinacbi.com

SHENZHEN

Unit 405, Building 3,
Sunmax Technology Plaza,
No.8 Keyuan Road,
Nanshan District, Shenzhen,
China 518057

TEL (86) 755-8586 9985
EMAIL mail@chinacbi.com

PENANG

Level 2, Moulmein Rise Shoppes,
9, Jalan Moulmein, Pulau Tikus,
10350 George Town, Penang,
Malaysia

TEL (60) 4-202 2049
EMAIL myinfo@cbil.com.hk

LONDON

13th Floor One Angel Court,
London,
United Kingdom,
EC2R7HJ

TEL (44) 20-3006 8818
EMAIL ukinfo@cbil.com.hk

